



SITE FOR GOVT PHYSICAL EDUCATION COLLEGE FOR WOMEN

545' X 400' = 5 ACRES [Red marked area]

N&TH (N-S) = 545'
E&TH (E-W) = 400'

Sd/-
 17/1/497
 Jt. Director of Ag'cult
 (Rice Dev.) Govt of West
 Bengal

STATE AGRICULTURE
 CHINSURAH, HOOR
 SCALE :- 1" = 330'
 DRAWN BY :-

SKETCH MAP

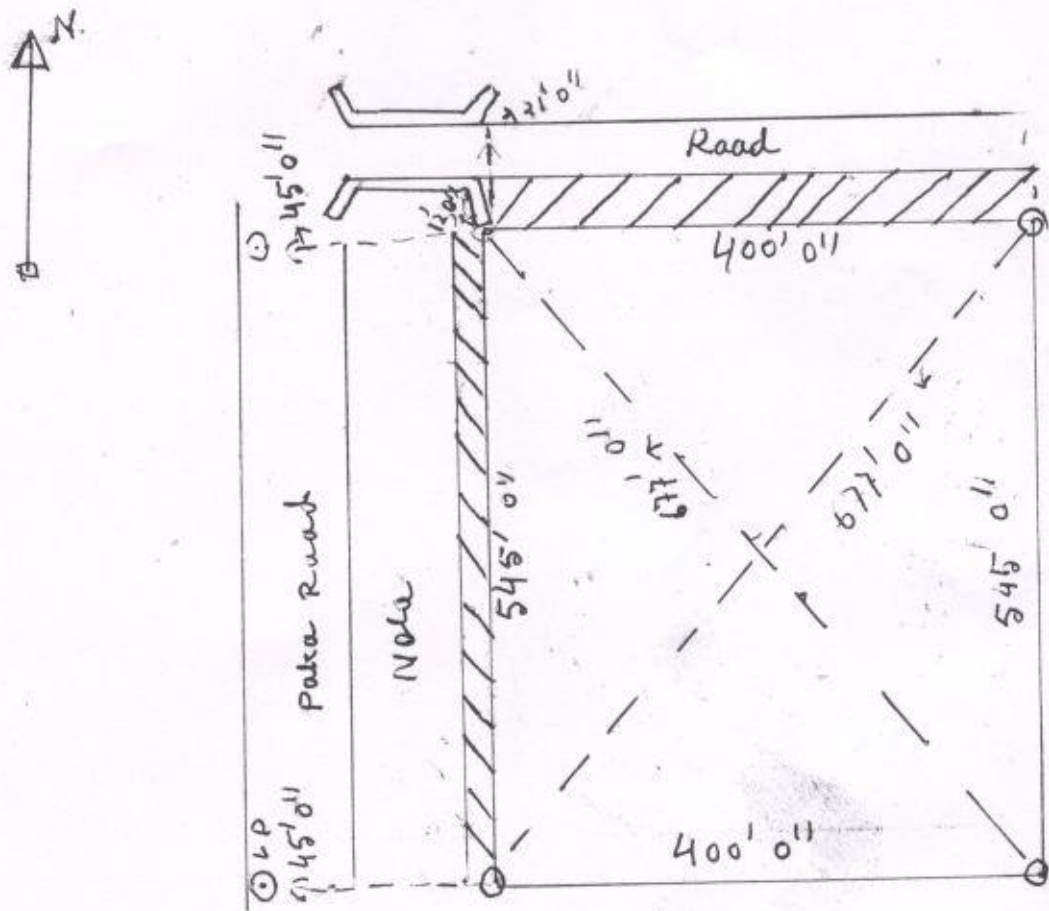
Mouza Simla JL No 16, Sheet 170 ±
Khaton No 1885

R.S. Dag No Part = 811, 801, 646, 688, 687, 686 and 685

R.S. Dag No Full = 800, 645, 813, 799, 642, 814, 798, 641,
635, 636, 637, 638, 680, 679, 678, 677,
631, 682, 683, 684.

Area of Land 5, acres,

NOT TO SCALE



Block Band & Land Reforms Office,
Chinsurah-Mogra Block,
Boro Bazar, Bandel, Hooghly

G. N. Das
No. 913794

Submitted by
R. Prasad
17.2.99